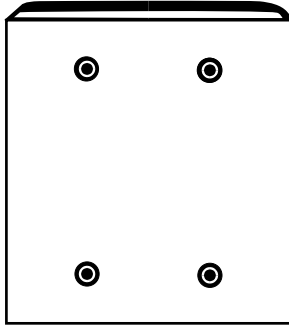




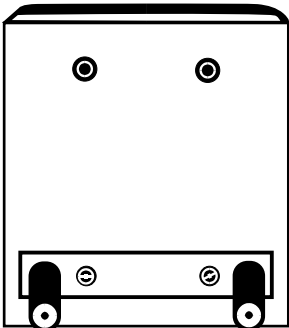
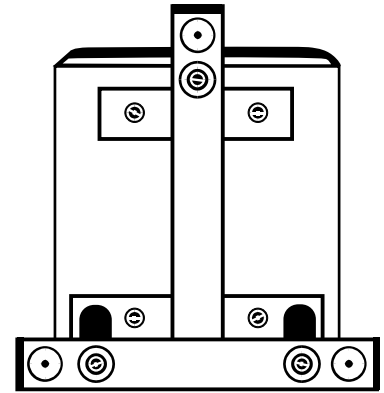
# Speaker Stand Assembly Instructions

for Nuance Stand models T.5, T1 and T2



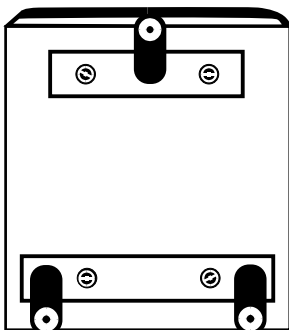
## Step 1

Turn the speaker cabinet upside down on a soft cloth or on a carpeted floor so that the stand insert holes on the bottom of the speaker are facing up.



## Step 2

Take the "Double Post" and using two black screws, loosely tighten the double post flat metal bracket into the two black insert holes near the back of the speaker cabinet. Make sure the "Double Posts" are angled behind the speaker as shown in the drawing. While pushing the double post flat metal bracket towards the back of the speaker cabinet, firmly tighten the two black screws.



## Step 3

Take the "Single Post" and using two black screws, loosely tighten the single post flat metal bracket into the 2 black metal insert holes near the front of the cabinet so that the "Single Post" is angled towards the front of the speaker cabinet.

## Step 4

Place the "T Base" carefully upside down on top of the three posts so that the three large holes are facing up.

## 5

Take three silver screws and screw the "T Base" on to the posts loosely until all the screws are in place, then firmly tighten all three screws.

## 6

Firmly tighten the single post flat metal bracket.

## 7

Tighten all seven screws one more time.

## 8

Screw in the Conical Supports™. Place 1 flat lock washer under each conical and tighten with a wrench. Do not overtighten. Please note that the Conical Supports™ are sharp and they could scratch or dent the floor.

If you would prefer plastic glides, they are available at no charge to Nuance stand customers. Please contact your Nuance dealer or Nuance directly for help at (905) 513-6600.